

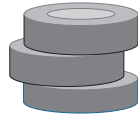
ROLL Advanced Solid Color Coating should be rolled in **TWO COATS**. Be sure to have: 3/8" - 1/2" nap synthetic roller cover, 4" roller or 3" synthetic brush for cut-ins, painter's tape, & roller tray.



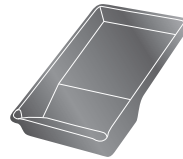
3/8"-1/2"
ROLLER COVER



3"SYNTHETIC
BRUSH



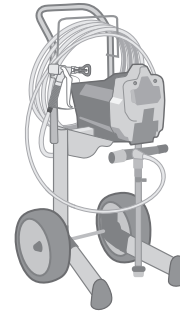
PAINTER'S
TAPE



ROLLER
TRAY

OR

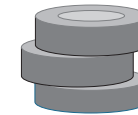
SPRAY We recommend using Airless equipment for all sprayed applications with pressure at 2000 psi and a 515-517 tip. Keep the spray gun level at all times.



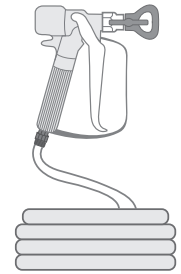
AIRLESS SPRAYER



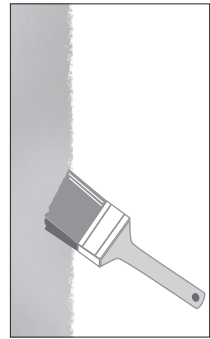
515 - 517 SPRAY TIP



PAINTER'S TAPE



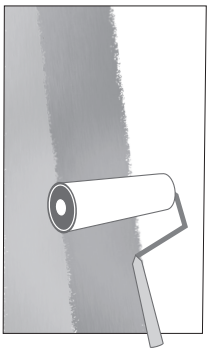
AIRLESS GUN / HOSE



1. CUT IN WITH BRUSH

Cut in around the edges of the area you wish to paint using the 3" brush or 4" roller set up.

Don't load the brush with too much paint. This can result in drips and heavy brush lines on the walls & surfaces.

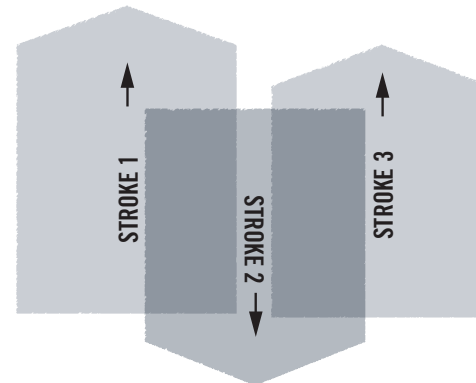
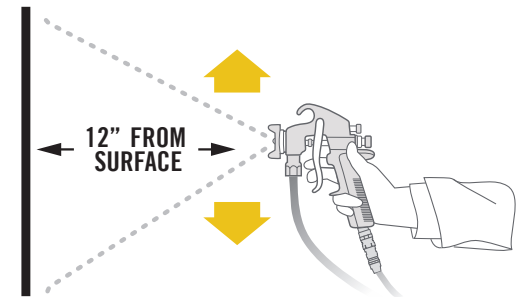


2. APPLY COATING WITH 3/8" or 1/2" NAP ROLLER

Next, switch to a roller cage set up with either a 3/8" or a 1/2" nap roller cover.

Roll from the ceiling to the floor in one vertical direction to minimize the appearance of lap marks.

SET PRESSURE
AT 2000 PSI
POSITION SPRAY
GUN 12" FROM
SURFACE



OVERLAP
EACH SPRAY
STROKE BY
ABOUT 50%

PRO
FOR
MAX

ADVANCED SOLID COLOR COATING

APPLICATION GUIDE

INTRO ProForMax Advanced Solid Color Coating is ready to use from the container. Advanced Solid Color Coating is ideal for drywall, composition board, ceiling tile, and concrete. Specific primers are recommended for new wood, stained, and other unique substrate conditions. Avoid brushing back into paint after it has been on the surface for more than five minutes. Allow paint to dry completely before touching up.

Advanced Solid Color Coating is a 100% Acrylic Ceramic microsphere finish that offers superior washability and stain resistance. Its unique formulation provides exceptional hiding power and the ceramic additive provides additional ease of application, flow, leveling, durability, as well as excellent adhesion making it ideal for homes, offices, or commercial spaces.

DRY TIME: Dry to touch in 30 minutes. May be re-coated in one hour. Dry times are affected by application technique and ambient conditions.

GETTING STARTED➔

CLEAN UP: A mixture of warm water and mild soap is the best cleaning solution. Prepare soapy water and pour into a clean container. Always use a clean container with clean soapy water and follow with a clear water rinse.

QUALITY ASSURANCE: Apply between 50°-85° with 50% relative humidity or lower. Variations in color may occur due to application technique or equipment. Bring product up to room temperature before applying.

IMPORTANT: DO NOT ALLOW PRODUCT TO FREEZE.

PLEASE VERIFY COLOR: All colors should be applied on a small area, allowed to dry, and approved for accuracy before painting. The manufacturer will not accept liability for unsatisfactory color. Stir well and box cans of the same color together prior to application to achieve continual uniformity.

THINNING: May be reduced by 2 oz. of water per gallon.

PREP SURFACE PREP: Surfaces must be free of dust, mildew, dirt, grease, loose paint, oil, glue size, calcimine, wax, soap, and other surface contamination. Patch irregularities with Spackle or an appropriate patching compound.

NEW PLASTER: Allow 28 days for plaster to cure. Knife off all nibs and protrusions. Wipe with a clean damp cloth to remove loose particles. Do not sand new plaster until it is primed.

WALLBOARD: Sheetrock, Gypsum Board - Joint compound should be sanded smooth, but avoid abrading the paper.

WOOD: Seal knots and stains with Fixall Alkyd Stain Killer F20400

PRIMING: Clean and prepare all substrates for eggshell paint. For metal and glossy surfaces or other surfaces where adhesion issues may arise, use a quality stain blocking bonding primer that will accept an acrylic topcoat.