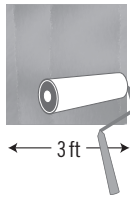


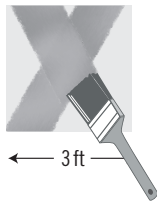
BRUSH Brushed ProForMax Interior Metallic Coating can be brush applied in TWO COATS, each coat consisting of first rolling the coating, then brushing the pattern. DO THIS FOR EACH COAT! Skipping the brushing on the first coat will leave visible lap marks and stippling on the second/final coat.



1. ROLL THE FINISH

Starting with the top left of the wall, roll a 3' x 3' square using the 1/2" nap roller.

DO NOT ATTEMPT TO ROLL AN AREA LARGER THAN 3' X 3'! This will result in the coating drying too fast causing it to ball up when it is brushed!



2. BRUSH THE FINISH

IMPORTANT! BE SURE TO START THIS WHILE THE COATING IS STILL WET!

While the coating is wet, use a 3" synthetic brush to make quick, random criss-cross strokes. Feather out the edges to help blend the sections.



3. MOVE TO NEXT 3' x 3' SECTION

Move to the adjoining section, repeat steps 1 & 2. Leave 1" between each section. This prevents the build up of coating. Repeat this process until the entire surface is covered. BLENDING: Be sure adjacent area is dry before blending.

REPEAT THESE STEPS FOR THE FINAL COAT!

OR

ROLL Rolled ProForMax Interior Metallic Coating can be roller applied in TWO COATS, each coat consisting of first rolling the Metallic Coating, then backrolling the finish. CUT-INS MUST BE BACK ROLLED TO ELIMINATE BRUSH STROKES!



1. APPLY WITH THE 1/2" NAP ROLLER

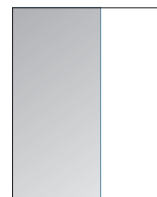
First, cut in with a 2" brush and back roll with a Whizz™ roller to eliminate brush strokes.

Using a 1/2" Purdy Collosus roller cover, roll the coating floor to ceiling in 3 foot wide sections.



2. BACK ROLL WITH POLAR BEAR™

Switch to the Wooster Polar Bear™ (included) set up and backroll the area while the coating is still wet. Lightly roll just past the edge of section to avoid lapping or building up too much coating between sections.



3. MOVE TO NEXT 3' LINEAR SECTION AND REPEAT STEPS 1 & 2

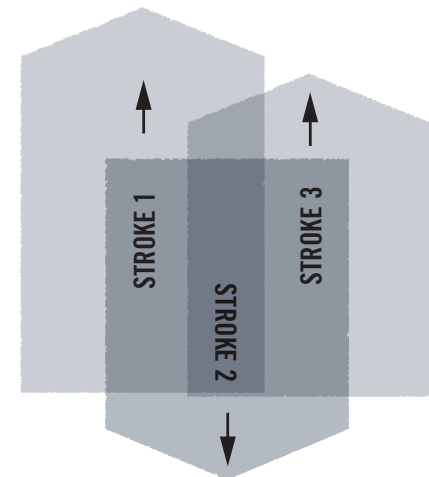
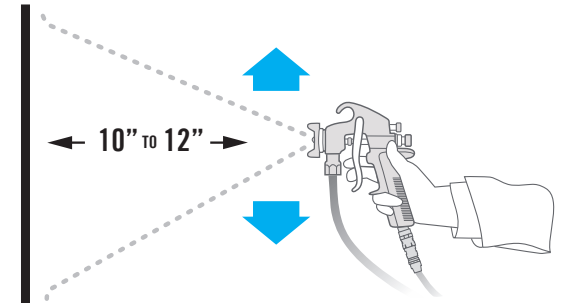
Keep repeating steps 1 and 2 until you have covered the entire area.

It's best to allow the initial coat to dry for 24 hours before proceeding to the final coat.

REPEAT THESE STEPS FOR THE FINAL COAT!

OR

SPRAY Interior Metallic Coating is spray allied in 4-5 LIGHT PASSES. DO NOT SPRAY WITH A WET EDGE! DO NOT OVER APPLY! Examine the finish from multiple angles before determining if it is complete. It should look the same from every direction. If striping or blemishes occur, apply another light pass.



WILL REQUIRE 4-5 LIGHT PASSES!

PRO FOR MAX

INTERIOR METALLIC COATING

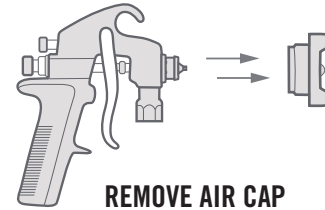
APPLICATION GUIDE

PREP SURFACE PREP: Surfaces should be clean, dry, free of dust, grease, wax. Scuff-sand if necessary. When applying over new sheet-rock, we recommend a Level 4 finish when brushing or rolling, and a level 5 for sprayed applications, the metallic finish will highlight any imperfections in the surface. Determine the specifier's standard prior to application. Once the materials are applied, they are considered acceptable and ICP assumes no further responsibility.

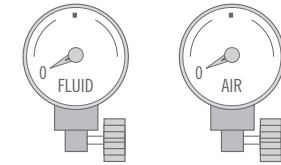
PRIMING: Use 100% acrylic primers, **tinted for brushed & rolled applications, white for sprayed applications.** **THINNING:** (Max 1 - 2 oz. of water per gallon if necessary.) **STRAINING:** Mix thoroughly and strain with a nylon bag prior to application. **COVERAGE:** Coverage rate is approximately 200 square feet per gallon whether brushing, rolling, or spraying. **CLEAN UP:** Clean up spills and tools with clean, soapy water. **QUALITY ASSURANCE:** Apply between 50°-85°. Slight variations in color may occur due to application technique or equipment. We recommend applying a mock-up to be approved by the specifier before beginning the full application or installation.

CONTINUED

SET UP **FOR SPRAY APPLICATION:** ProForMax Interior Metallic coating may be applied with conventional or HVLP spray equipment. Follow this guide to set up spray equipment. **EQUIPMENT:** Binks® 2100 - 66SK External Mix Air Cap with 66 SS Fluid Nozzle, 565 Needle, and 2 gallon pressure pot.

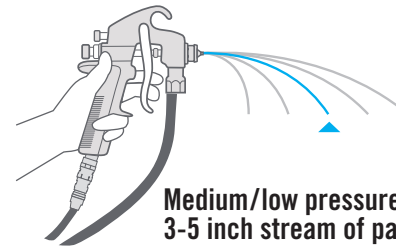


REMOVE AIR CAP



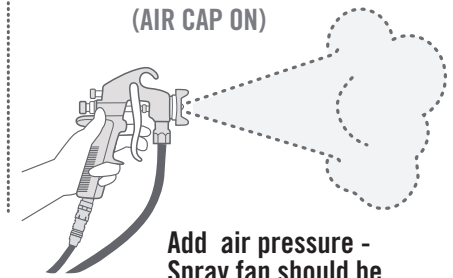
SET FLUID & AIR
PRESSURE TO ZERO

INCREASE FLUID PRESSURE
(WITH AIR CAP OFF)



Medium/low pressure -
3-5 inch stream of paint
before it begins to arch

INCREASE AIR PRESSURE
(AIR CAP ON)



Add air pressure -
Spray fan should be
Slightly under atomized

PRO TIPS **SPRAY STROKE:** Begin each stroke a few inches before the edge of the surface. Move in one continuous vertical direction until the other edge is reached. Release the trigger and continue the motion for a few inches past the edge. Repeat for the return stroke. Work your way across the surface - this equals one light pass. It will require 4-5 light passes like this to match the color of the control sample.

NUMBER OF PASSES: 4 to 5 light passes over the desired surface. 1st Pass across the surface: Primer still visible—may appear striped. 2nd Pass: Finish begins to fill in—striping still visible. 3rd Pass: Color should appear solid and uniform. Close to complete. 4th Pass: Surface should be complete. 5th Pass: ONLY IF NECESSARY. Wait until each pass is dry before applying next pass.

SPRAY STROKE OVERLAP: Overlap each spray stroke by 50-75%. Spray fast enough that a wet edge does not develop.

SPRAY GUN POSITIONING: Approximately 10-12 inches from the surface to be painted. Maintain a 10-12 inch spray fan. Keep spray gun level.